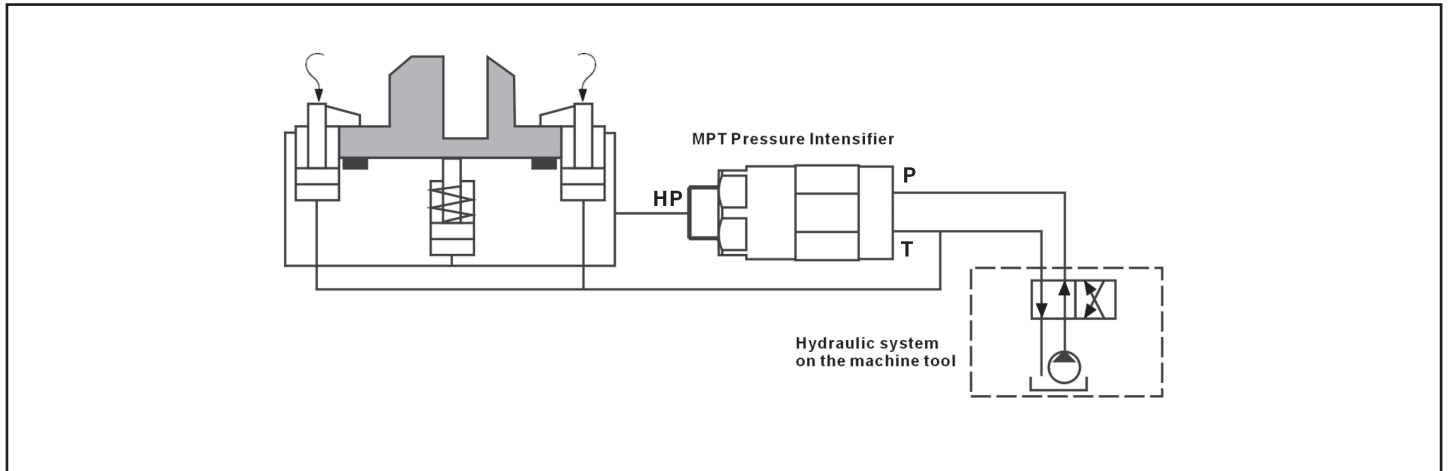




**Workholding Applications**

Hydraulic workholding circuits on machine tools are a major application area for the MP series of hydraulic pressure intensifiers. Inserting the intensifier between the hydraulic system already on the machine tool and the hydraulic clamping components allows the higher pressure to be obtained and controlled from the supply side.



**High Flow Applications**

In high flow applications (plastic injection moulding machines, pressure die casting machines, demolition tools etc.) the MP intensifiers are inserted parallel with a pilot operated check valve which is designed to take the full flow to be used to fill the cylinder and subsequently the end pressure is delivered by the intensifier. During retraction the external POV allows the full flow to the tank. This setup allows high pressure to be obtained with a minimal reduction cycle time.

