



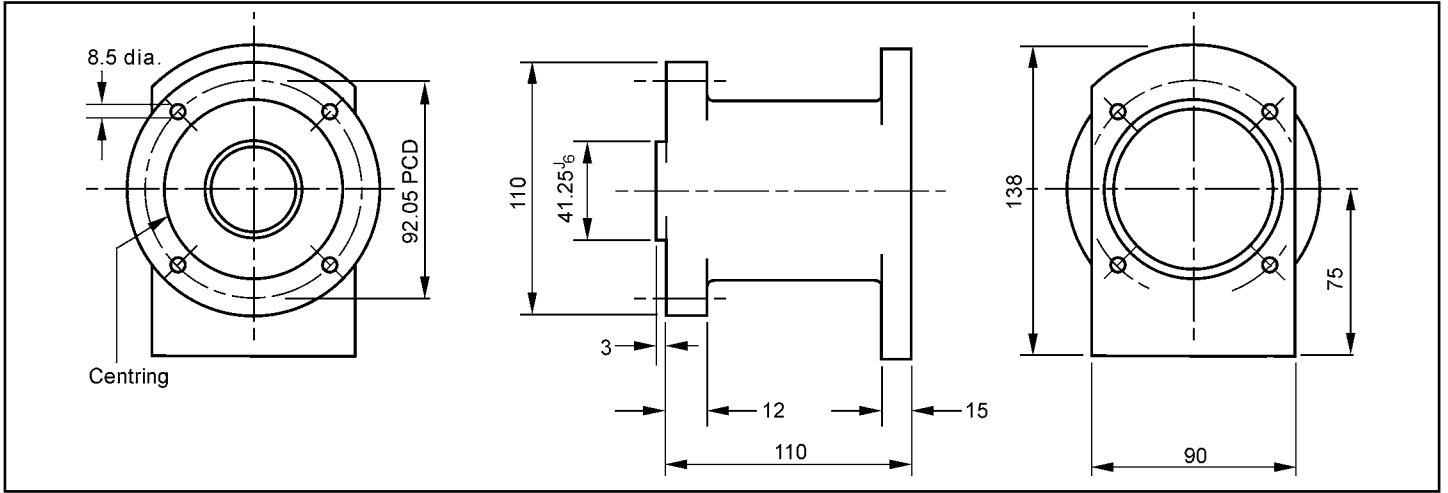
Quality Products for Mechanical
& Fluid Power



PETROL ENGINE ADAPTORS



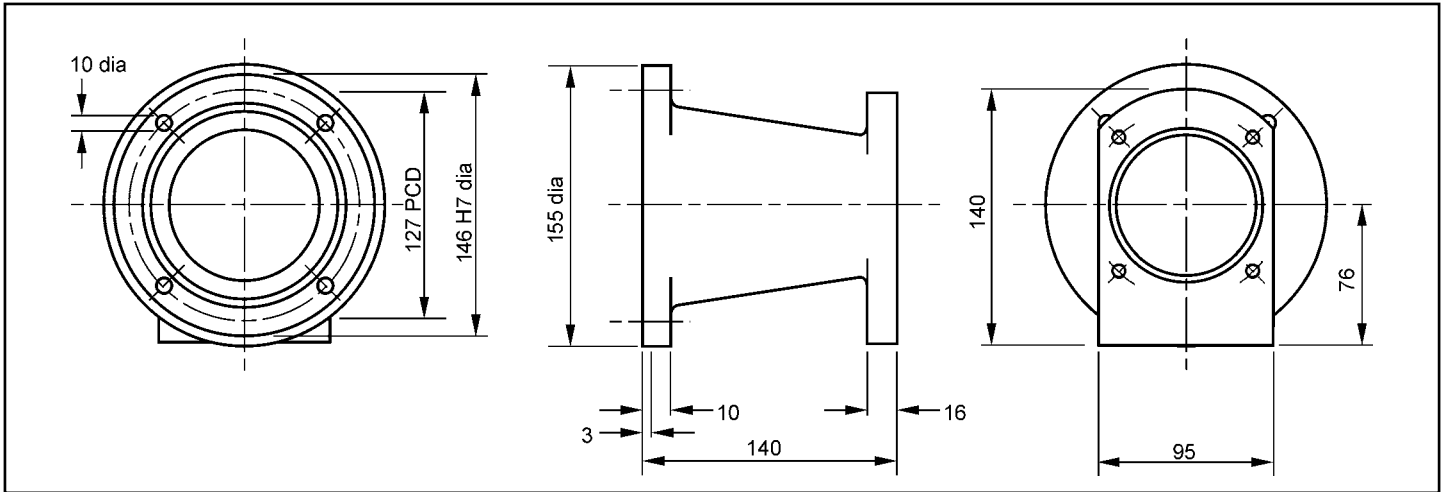
PETROL ENGINE ADAPTORS



Part No: PED 1/- - /110

To suit: Honda, Briggs & Stratton, Kawasaki, Mag, Robin, Suzuki, Winsconsin, etc.

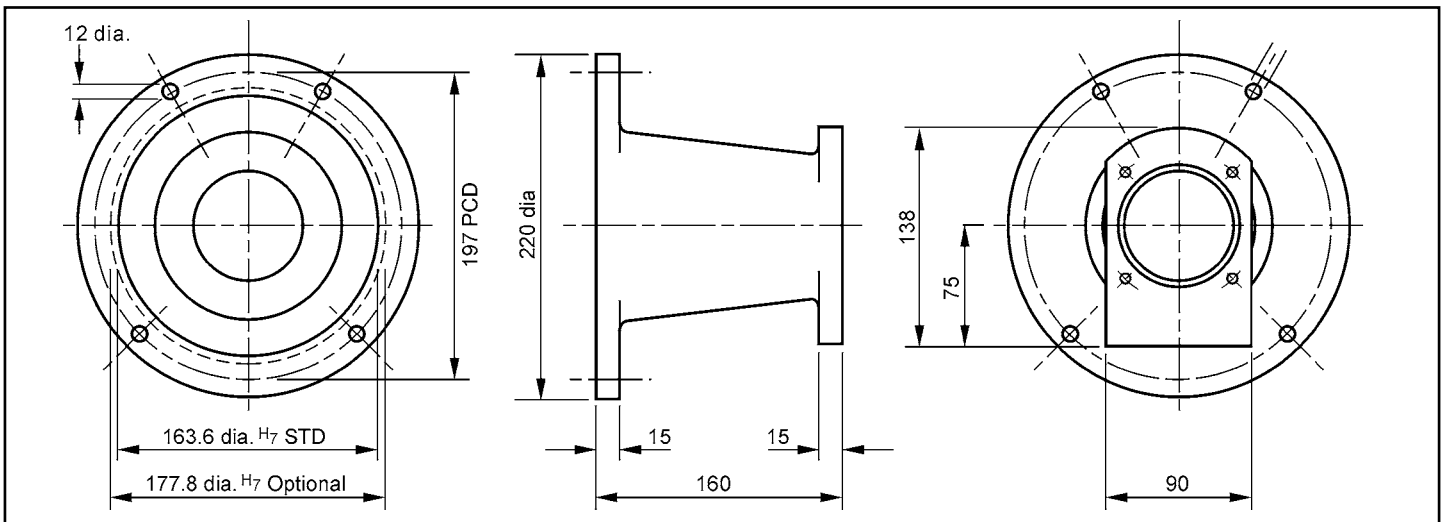
Units can be machined to suit most hydraulic pump mountings.



Part No: LTO 414/- - /140

To suit: Honda, Briggs & Stratton, Kubota, etc.

Units can be machined to suit most hydraulic pump mountings.

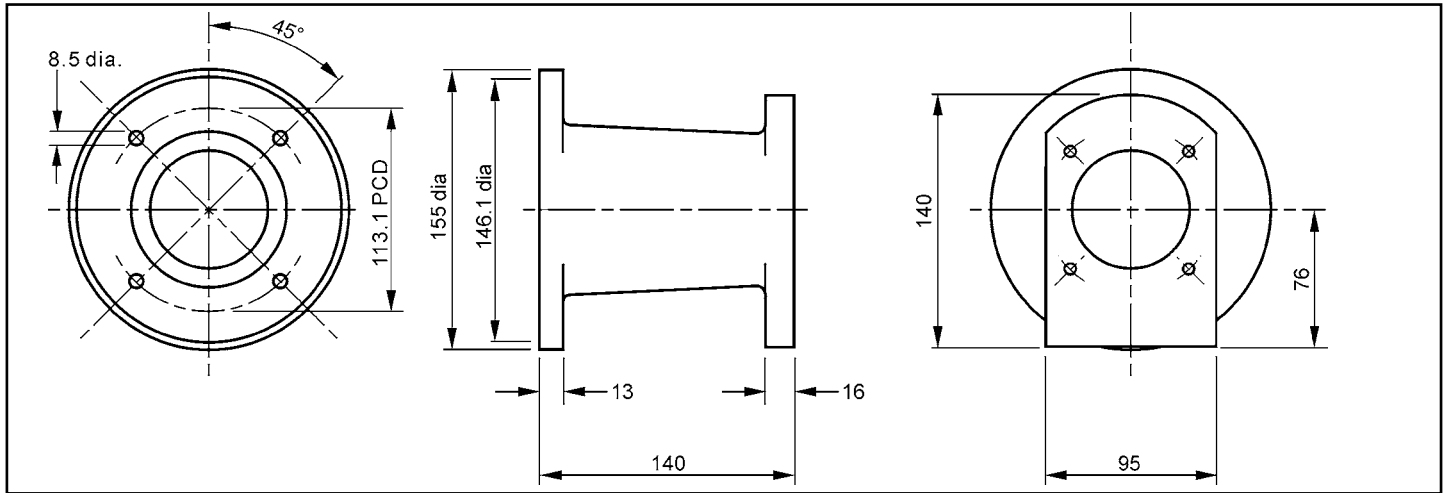


Part No: PED 3/- - /160 (STD Spigot), PED 3X/- - /160 (Optional spigot)

To suit: Honda, Briggs & Stratton, Kawasaki, Mag, Robin, Suzuki, Winsconsin, etc.

Units can be machined to suit most hydraulic pump mountings.

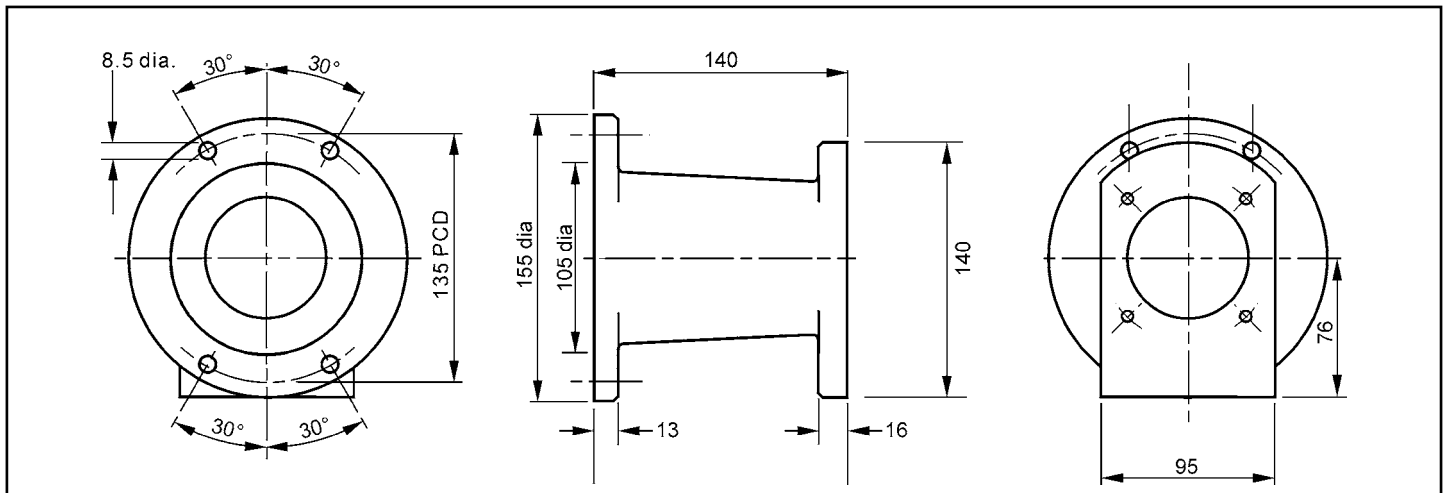
PETROL ENGINE ADAPTORS



Part No: LTOC95/- - /140

To suit: Kubota OC95 engine.

Units can be machined to suit most hydraulic pump mountings.



Part No: LTO1B40/- - /140

To suit: Hatz 1B40 engine.

Units can be machined to suit most hydraulic pump mountings.

Adaptors to suit engine camshaft drives and for vertical mounting available on request.

Please contact jbj Techniques technical office, telephone: **01737 767493** or email: **info@jbj.co.uk**

Additional reference catalogues

Compatible couplings - **Pump Drive Components** catalogue and **Torsional Couplings** catalogue.

Diesel engine adaptors - **Pump Drives** catalogue and **Torsional Couplings** catalogue.

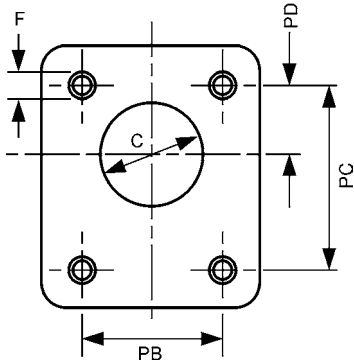
For pump mounting machine codes and adaptors please refer to back page of this leaflet.

PETROL ENGINE ADAPTORS

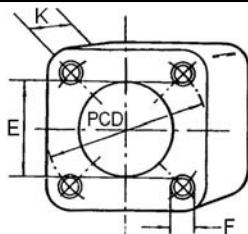


Pump face machining codes (- - -)

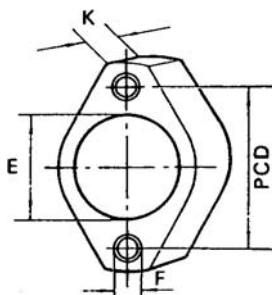
		Rectangular Adaptor Flange				
Code	No. off	F	PB	PD	PC	C
002	4	M6	52.4	26.5	72.0	25.4
003	4	M6	56.0	24.5	73.0	30.0
004	4	M8	71.5	32.5	96.0	36.5
005	4	M8	98.5	43.0	128.0	50.8
006	4	M10	98.5	45.0	137.0	50.8
007	4	M12	127.0	48.2	148.0	60.0
008	4	M10	114.3	49.3	149.4	60.3
009	4	M10	105.5	52.5	153.0	101.6
010	4	M12	142.8	65.1	196.0	63.5
011	4	M12	143.0	64.3	188.0	63.5
012	4	M6	71.5	32.5	96.0	36.5
014	4	M8	72.0	34.0	100.0	80.0
015	4	M10	102.0	48.0	145.0	105.0
016	4	M10	124.0	50.0	164.0	85.0



		Square Adaptor Flange			
Flange Ref.	K	PCD	E	F	
FR12/025/020	23	125.0	100.0	M10	
FR12/125/023	23	127.0	101.6	M12	
FR12/021/025	25	161.5	127.0	M12	
FR12/026/025	25	160.0	125.0	M12	
FR12/021/033	33	161.5	127.0	M12	
FR12/026/033	33	160.0	127.0	M12	



		Oval Adaptor Flange			
Flange Ref.	K	PCD	E	F	
FR12/060/023	23	106.4	82.55	M10	
FR12/042/023	23	100.0	63.00	M8	
FR12/063/023	23	110.0	80.00	M10	
FR12/066/023	23	106.4	85.00	M10	
FR12/083/023	23	106.4	80.00	M10	
FR12/070/023	23	146.0	101.60	M12	
FR12/023/023	23	125.0	100.00	M10	
FR12/076/023	23	146.0	105.00	M12	
FR12/075/023	23	146.0	100.00	M12	
FR12/072/023	23	140.0	100.00	M12	
FR12/071/023	23	125.0	100.00	M12	
FR12/074/023	23	140.0	112.00	M12	
FR12/060/035	35	106.4	82.55	M10	
FR12/063/035	35	110.0	80.00	M10	
FR12/065/035	35	115.0	80.00	M10	
FR12/080/025	25	181.2	127.00	M16	
FR12/082/025	25	180.0	125.00	M16	



28 Trowers Way Holmethorpe Industrial Estate
Redhill Surrey RH1 2LW. UNITED KINGDOM



Gear Pumps/Motors



Mini Power Packs



Screw Pumps



LSHT Motors/Geared Motors



Coolers



BD Clutches & Gearboxes



BDS Clutches



Planetary Gearboxes



Marine Gearboxes



Splitter Gearboxes



Hydraulic Adaptors



Torsional Couplings



Pressure Intensifiers



Bellhousings



Torsionally Flexible Couplings



Torsionally Rigid Couplings



FD20 Data Logging Device



quality products for mechanical & fluid power

www.jbj.co.uk/productlist.html



Torque Limiting Couplings



Dampers



Tanks/Accessories



ATEX Approved



Flanges



Engine Adaptor Kits



Flow Dividers