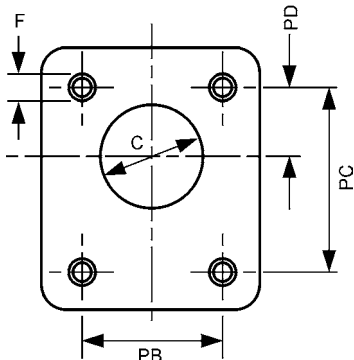


# PETROL ENGINE ADAPTORS

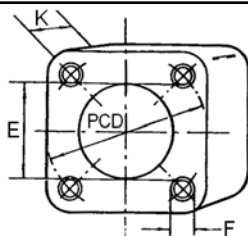


## Pump face machining codes (- - -)

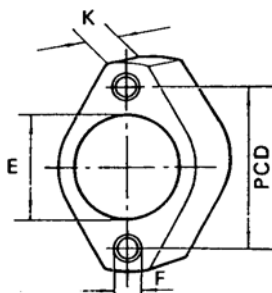
		Rectangular Adaptor Flange				
Code	No. off	F	PB	PD	PC	C
002	4	M6	52.4	26.5	72.0	25.4
003	4	M6	56.0	24.5	73.0	30.0
004	4	M8	71.5	32.5	96.0	36.5
005	4	M8	98.5	43.0	128.0	50.8
006	4	M10	98.5	45.0	137.0	50.8
007	4	M12	127.0	48.2	148.0	60.0
008	4	M10	114.3	49.3	149.4	60.3
009	4	M10	105.5	52.5	153.0	101.6
010	4	M12	142.8	65.1	196.0	63.5
011	4	M12	143.0	64.3	188.0	63.5
012	4	M6	71.5	32.5	96.0	36.5
014	4	M8	72.0	34.0	100.0	80.0
015	4	M10	102.0	48.0	145.0	105.0
016	4	M10	124.0	50.0	164.0	85.0



		Square Adaptor Flange			
Flange Ref.	K	PCD	E	F	
FR12/025/020	23	125.0	100.0	M10	
FR12/125/023	23	127.0	101.6	M12	
FR12/021/025	25	161.5	127.0	M12	
FR12/026/025	25	160.0	125.0	M12	
FR12/021/033	33	161.5	127.0	M12	
FR12/026/033	33	160.0	127.0	M12	



		Oval Adaptor Flange			
Flange Ref.	K	PCD	E	F	
FR12/060/023	23	106.4	82.55	M10	
FR12/042/023	23	100.0	63.00	M8	
FR12/063/023	23	110.0	80.00	M10	
FR12/066/023	23	106.4	85.00	M10	
FR12/083/023	23	106.4	80.00	M10	
FR12/070/023	23	146.0	101.60	M12	
FR12/023/023	23	125.0	100.00	M10	
FR12/076/023	23	146.0	105.00	M12	
FR12/075/023	23	146.0	100.00	M12	
FR12/072/023	23	140.0	100.00	M12	
FR12/071/023	23	125.0	100.00	M12	
FR12/074/023	23	140.0	112.00	M12	
FR12/060/035	35	106.4	82.55	M10	
FR12/063/035	35	110.0	80.00	M10	
FR12/065/035	35	115.0	80.00	M10	
FR12/080/025	25	181.2	127.00	M16	
FR12/082/025	25	180.0	125.00	M16	



28 Trowers Way Holmethorpe Industrial Estate  
Redhill Surrey RH1 2LW. UNITED KINGDOM