

Heat Exchanger PK series for industrial use



- » Plate material: Stainless steel (AISI316L)
- » Solder: Copper
- » Operating pressure max.: 30 bar (nickel 16 bar)
- » Operating temperature max.: $\pm 195^{\circ}\text{C}$

for further detail contact jbj Techniques Limited technical office:
telephone: **01737 767493** or email: info@jbj.co.uk



www.jbj.co.uk



Dimensions

Types	A	B	C	D	E	F	G
PK-10	74	40	204	170	20	10,0 + 2,30 x n	2 x M8 x 20
PK-20	90	43	231	182	20	13,0 + 2,35 x n	2 x M8 x 20
PK-220	90	43	328	279	20	13,0 + 2,35 x n	4 x M8 x 20
PK-240	90	43	464	415	20	12,0 + 2,30 x n	4 x M8 x 20
PK-30	124	73	173	120	20	13,0 + 2,35 x n	2 x M8 x 20
PK-40	124	73	335	281	20	13,0 + 2,30 x n	4 x M8 x 20
PK-50	124	73	532	478	20	13,0 + 2,30 x n	optional
PK-70L/M	271	200	532	460	65	13,5 + 2,35 x n	optional
PK-80	271	161	532	421	65	13,5 + 2,35 x n	optional
PK-90	271	161	802	690	65	13,5 + 2,35 x n	optional
PK-100	380	237	875	723,3	65	23,0 + 2,35 x n	optional

* The dimension „F“ results for PK-10 to PK-100 from the number of plates and the value cover plate + base plate. n = number of plates.

** Floorbracket BK 35 for PK-30 up to PK-50 and Floorbracket BK 79 for PK-70 up to PK-90.

Technical Data

Connection ports

- F1 Primary – On
- F2 Primary – Of
- F3 Secondary – Of
- F4 Secondary – On

Plate material:

Stainless steel (AISI316L)

Solder:

Copper

Operating pressure max.:

30 bar (nickel 16 bar)

Operating temperature max.:

±195°C



Size	No. of plates	Internal thread I	Key width SW	External thread A	Flange F
PK-10	8, 10, 14, 20, 24, 30, 34, 40, 44, 50	G 1/2"	--,	G 1/2", G 3/4"	--
PK-20	8, 10, 14, 20, 24, 30, 34, 40, 44, 50	G 1/2", G 3/4"	--, SW 30	G 1/2", G 3/4", G1"	317
PK-220 PK-240	8, 10, 14, 20, 24, 30, 34, 40, 44, 50	G 1/2", G 3/4"	--, SW 30	G 1/2", G 3/4", G1"	317
PK-30	8, 10, 14, 20, 24, 30, 34, 40, 44, 50	G 1/2" bis G1"	SW 36, SW 46	G 3/4", G1", G1 1/4"	455
PK-40 PK-50	8, 10, 14, 20, 24, 30, 34, 40, 44, 50, 60, 70, 80, 90, 100	G 3/4" bis G1"	SW 36, SW 46	G 3/4", G1", G1 1/4"	
PK-70L/70M	20, 24, 30, 34, 40, 44, 50, 60, 70, 80, 90, 100, 110, 120, 130, 140, 150	G1 1/2"	SW 55	G1 1/2", G2"	DN40 DN50
PK-80 PK-90	20, 24, 30, 34, 40, 44, 50, 60, 70, 80, 90, 100, 110, 120, 130, 140, 150, ..., 260	G2 1/2"	SW 85	G2", G2 1/2"	DN65 DN80
PK-100	50, 60, 70, 80, 90, 100, 110, 120, 130, 140, 150, 160, 170, 180, 190, 200, ..., 300	on request		on request	DN65, DN80, DN100*

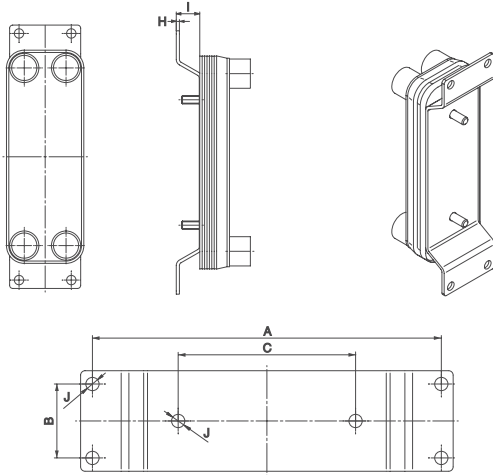
Other connection sizes on request

*Special

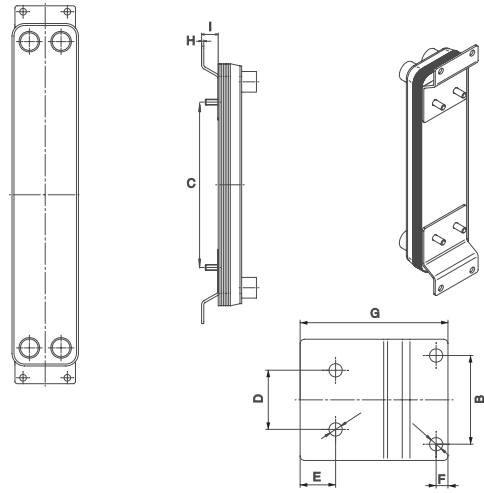


Brackets

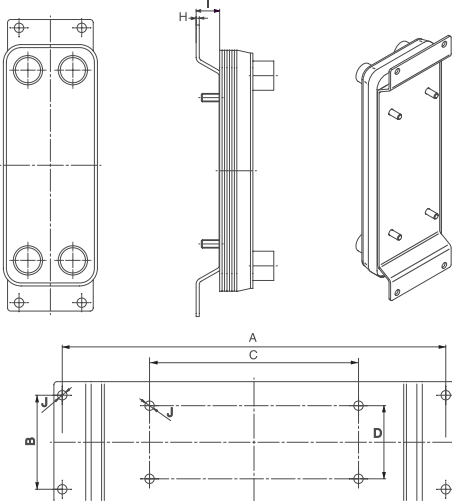
Model 1 for PK-10; PK-20; PK-30



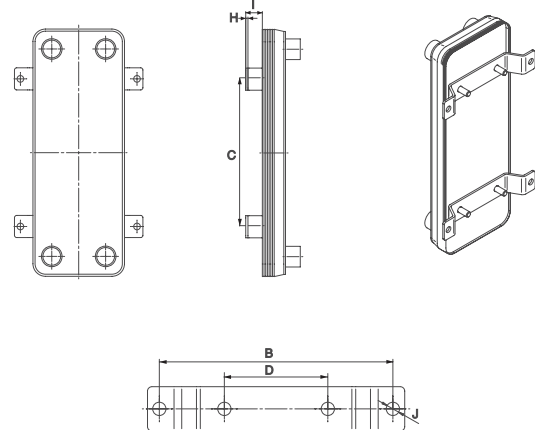
Model 3 for PK-220; PK-240



Model 2 for PK-40



Model 4 for PK-220; PK-240; PK-40



Type	Model	A	B	C	D	E	F	G	H	I	J
PK-10	1	236	50	120	-	-	-	-	3	22,5	Ø 9
PK-20	1	263	60	140	-	-	-	-	3	22,5	Ø 9
PK-220	3	-	60	224	40	24	8	100	3	22,5	Ø 9
PK-220	4	-	124	224	40	-	-	-	3	22,5	Ø 9
PK-240	3	-	60	360	40	24	8	100	3	22,5	Ø 9
PK-240	4	-	124	360	40	-	-	-	3	22,5	Ø 9
PK-30	1	205	90	80	-	-	-	-	3	22,5	Ø 9
PK-40	2	367	90	200	70	-	-	-	3	22,5	Ø 9
PK-40	4	-	158	200	70	-	-	-	3	22,5	Ø 9

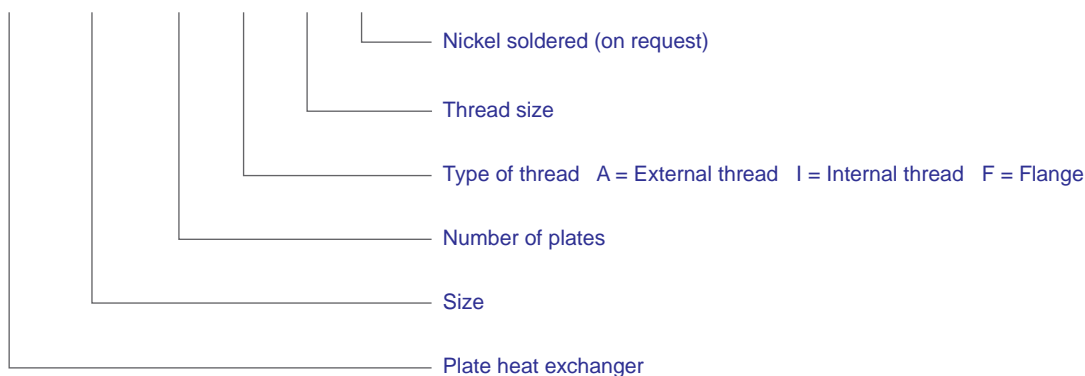
Accessories/Optional

Various screwed connections, Insulations made from PU hard foam, Diffusion-tight insulation, Brackets: - Floor wall consoles up from threaded bolts welded on as per customer drawing PK-30 optional.



Order code example

PK - 10 - 20 - I - G1 - N



Heat Exchanger PK series for industrial use



- » Plate material: Stainless steel (AISI316L)
- » Solder: Copper
- » Operating pressure max.: 30 bar (nickel 16 bar)
- » Operating temperature max.: $\pm 195^{\circ}\text{C}$

for further detail contact jbj Techniques Limited technical office:
telephone: **01737 767493** or email: info@jbj.co.uk



www.jbj.co.uk